

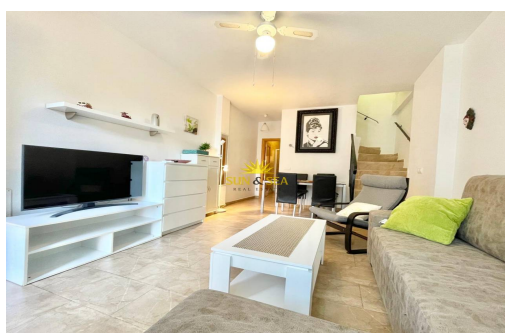


Near the sea

Opportunities

Pets to consult

LONG TERM RENTAL



Murcia - Cartagena

Long time Rental - Chalet

Ref. RENT-3706L

900€



2 BEDROOMS



2 BATHROOMS



85M²



90M²



D



RENTAL AVAILABLE NOW FOR THE WHOLE YEAR! Charming chalet with 2 bedrooms and 2 bathrooms, with 85 m² of living space and a total of 90 m², located in the exclusive area of Isla Plana, Cartagena, just 300 meters from Isla Plana Beach. The property is fully furnished and offers spacious and bright rooms, ideal both as a permanent residence and for holidays near the sea. Main features: 2 bedrooms and 2 bathrooms Spacious and bright living-dining room with TV Ceiling fan in the living room Independent kitchen fully equipped with appliances Laundry area Large and very bright bedrooms Energy rating: D Pets upon consultation Excellent location: 300 m from Isla Plana Beach 1 minute from leisure areas and services 34 km from Murcia Airport A chalet that combines space, comfort and proximity to the sea, ideal for enjoying the tranquility of Isla Plana. Available for rent now until the end of May for €700 per month. Interest...

key features

- Bedrooms: 2
- Bathrooms: 2
- Built: 85m²
- Plot: 90m²
- Energy Rating: D
- Distance to beach: 300Mts.
- Distance to airport: 34,5Km.
- Distance to amenities: 1Mins.
- Distance to Golf: 15Mins.

Features

- Air conditioner
- Electricity
- Furnished
- Smoke outlet