

Murcia - San Pedro del Pinatar

New Build - Townhouse

Ref. NB-56648

298.000€



3 BEDROOMS



2 BATHROOMS



83M²



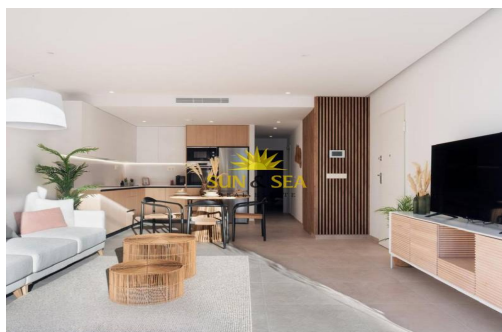
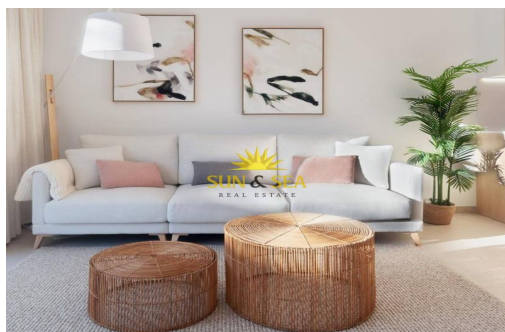
21M²



PRIVATE



B



New Build Bungalows in San Pedro del Pinatar – Luxury and Nature by the Sea Prime Location Near Beaches and Nature Reserve Discover an exclusive residential complex of new build bungalows located in one of the most privileged areas of San Pedro del Pinatar, Murcia. Just 1.8 km from the beaches of the Mediterranean Sea and only 500 metres from the protected Salinas y Arenales Regional Park, this development offers a unique lifestyle surrounded by nature, tranquillity and all essential services. The complex sits in a peaceful residential neighborhood facing a large park, with easy walking access to supermarkets, shops, cafés, the town centre, and the local bus station, providing excellent connections to nearby towns such as Torrevieja and Cartagena. Modern Mediterranean Living – Bungalows with Garden or Solarium This boutique development offers 2 and 3 bedroom bungalows with two distinct layouts: Ground floor homes with private gardens Top...

key features

- Bedrooms: 3
- Built: 83m²
- Energy Rating: B

- Bathrooms: 2
- Plot: 21m²

Features

- Air Conditioning: Pre-Installed
- Communal Pool
- Garden
- Gym
- Near Bus Route
- Near Schools
- Space
- Under-Build / Basement

- Beach: 2000 Meters
- Double Bedrooms: 3
- Gated
- Location: Coastal, Urbanisation
- Near Commercial Center
- Number of Parking Spaces: 1
- Terrace: 23 Msq.
- Useable Build Space: 70 Msq.