

Alicante - Benitachell

New Build - Villa

Ref. NB-55399

2.456.000€



3 BEDROOMS



4 BATHROOMS



239M²



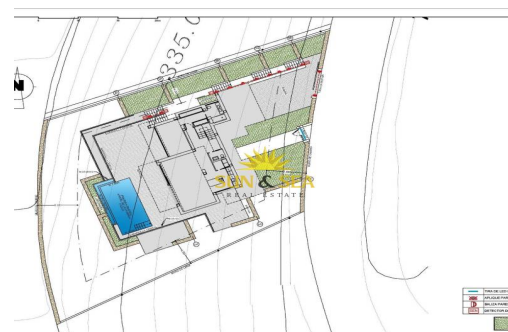
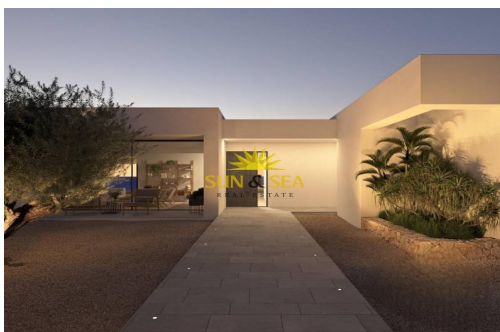
932M²



PRIVATE



B



NEW BUILD LUXURY VILLA IN CUMBRE DEL SOL New Build luxury villa with spectacular sea views is ideal to live in with the family or to enjoy with friends. It is located at the top of Puig de la Llorençà, in the Residential Cumbre del Sol dominating over the residential area and with an unbeatable sea view. A unique and exclusive place in the North Costa Blanca region. Its modern architecture, based on straight lines, combined with the Mediterranean style blends perfectly with its surroundings. This villa has been completely designed to enhance functionality and comfort, without cutting back an ounce on design. The villa is surrounded by a large garden with indigenous plants and elements. A feature that particularly stands out is the natural stone walls. The villa has a private parking area on the top floor for up to two vehicles, since access to the villa is located on the same floor. Once inside, we will find two bedrooms with a private bath...

key features

■ Bedrooms: 3

■ Built: 239m²

■ Energy Rating: B

■ Bathrooms: 4

■ Plot: 932m²

Features

■ Air Conditioning: Pre-Installed

■ Double Bedrooms: 3

■ Gated

■ Near Commercial Center

■ Number of Parking Spaces: 2

■ Terrace: 220 Msq.

■ Useable Build Space: 190 Msq.

■ Beach: 500 Meters

■ Garden

■ Location: Coastal

■ Near Schools

■ Private Pool

■ Under-Build / Basement

■ Views: Sea