

Murcia - Alhama de Murcia

New Build - Apartment

Ref. NB-82017

169.500€



2 BEDROOMS



2 BATHROOMS



76M²



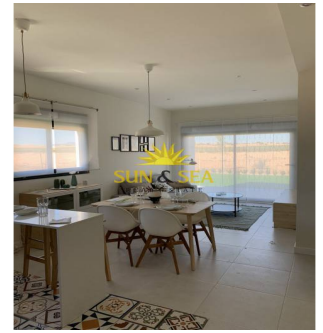
70M²



YES



X



GROUND FLOOR IN FIRST LINE OF GOLF !! Brand new two bedroom, two bathroom apartments with front line golf views to ALHAMA SIGNATURE GOLF, a fabulous 18 hole golf course designed by Jack Nicklaus. CONDADO DE ALHAMA is a fantastic Golf Resort with many facilities and services. A shopping center, sports center, a range of bars and restaurants, supermarket ... and more than 25 community pools and gardens. Just 18 minutes by car from the new International Airport of the Region of Murcia. The ground floor apartments have an area between 73.88m² and 75.22m² divided into 2 bedrooms, 2 bathrooms, an open living room-kitchen-dining room of 26.80m², a 17m² terrace and a garden from 75m² to 183.40m². Included: Parking lot Complete bathroom Air conditioning pre-installation Video intercom This promotion has a 24 hour surveillance system every day of the year. We will also enjoy the magnificent views of the golf course and we can be on the beaches of Mazarrón...

key features

- Bedrooms: 2
- Built: 76m²
- Energy Rating: X
- Bathrooms: 2
- Plot: 70m²

Features

- Air Conditioning: Pre-Installed
- Communal Pool
- Elevator/Lift
- Gated
- Near Childrens Parks
- Near Golf / Golf Resort Property
- Number of Parking Spaces: 1
- Useable Build Space: 63 Msq.
- Beach: 18000 Meters
- Double Bedrooms: 2
- Garden
- Location: Mountain, Urbanisation
- Near Commercial Center
- Near Schools
- Terrace: 15 Msq.